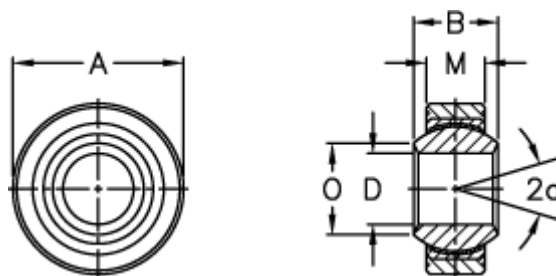


Article number: 03403010

Description: Fluro Rod end GLXSW 10

Measures



A	= 26	Static load C0 (kN) = 39
a (degrees)	= 13	Weight = 38
B	= 14	
D	= 10	
Dynamic load C (kN)	= 23.4	
M	= 10.5	
O	= 12.9	
Permissible rpm	= 350	